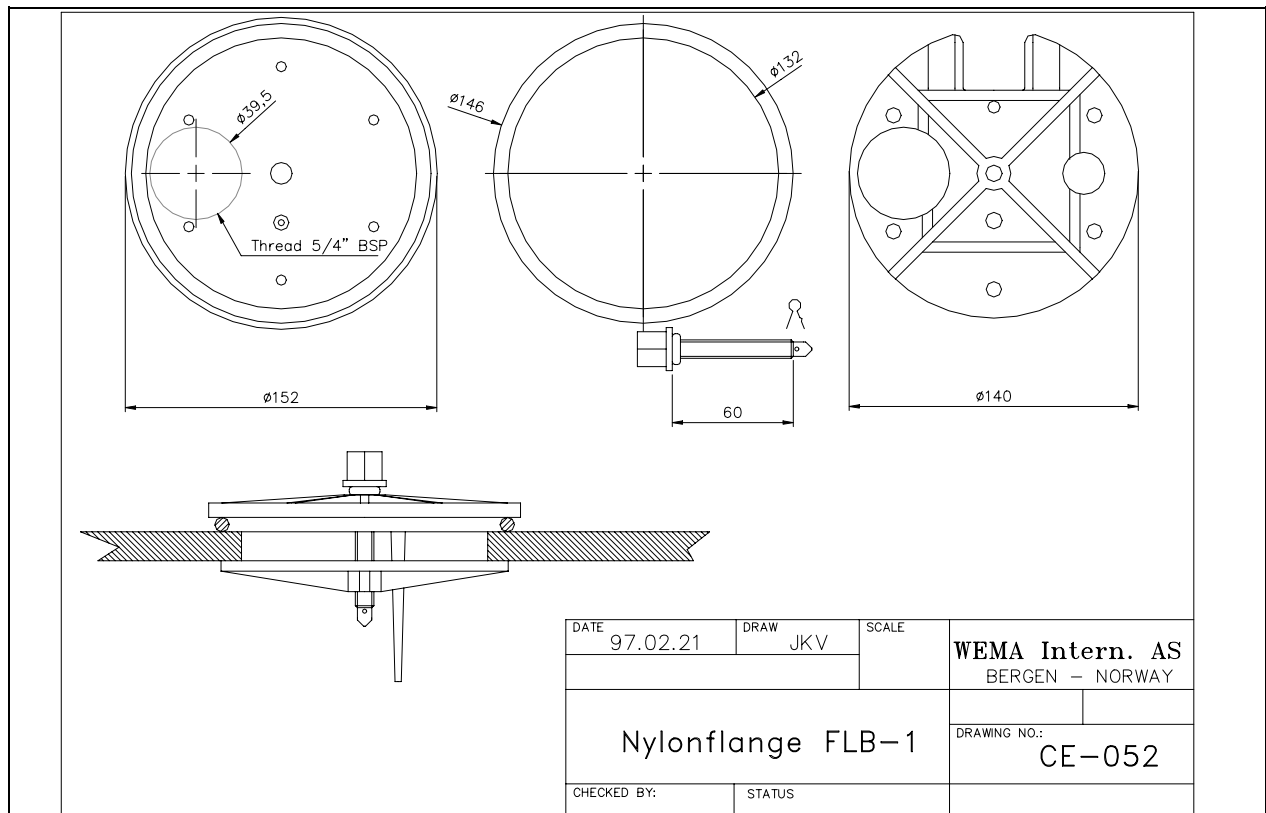


Flange Ø 115/ 1 hole	FLB-1	CE
	art.no: 163120	Revision: 1998-5-20



Description:

The WEMA FLB 1 is made from nylon and is used as an inspection hatch in tanks, and with 1 hole for mounting in a fuel or water sensor.

Installation

Cut a 11,5 cm hole in the tank. Loosely screw together the two plates with stainless split pin in place. Lightly coat the O-ring with dishwasher liquid and put between the two plates. Rotate the bottom plate through hole in tank and tighten central screw to give seal with the O-ring on the tank top surface.